

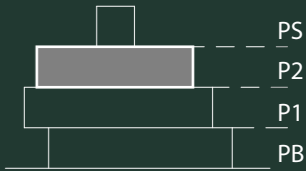
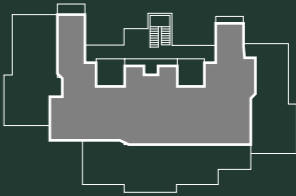
EARTH

EDIFICIO 03

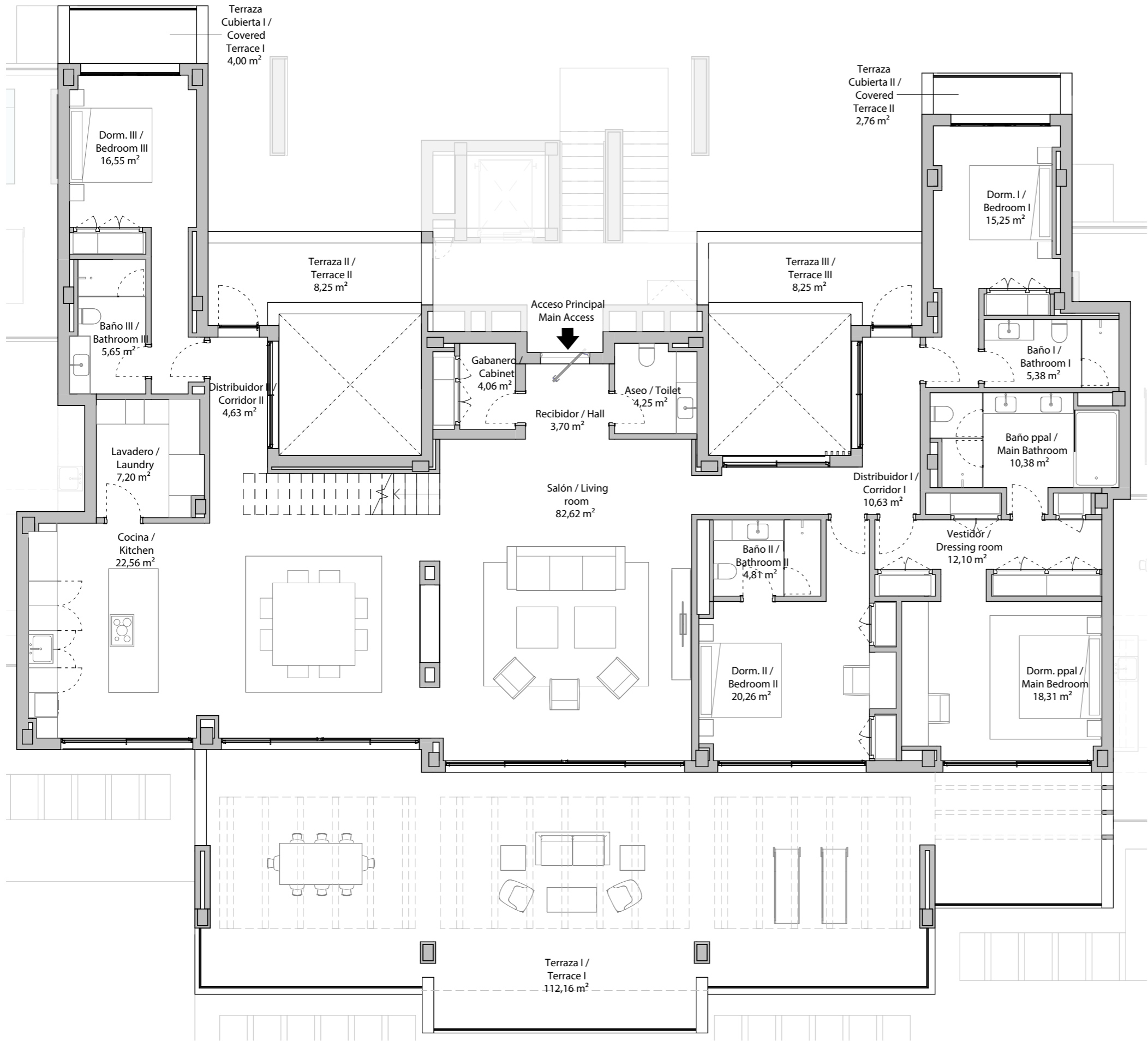
Apartamento 21 P0

CUADRO DE SUPERFICIES / AREAS

|   | SUP. ÚTIL<br>USABLE AREAS | SUP. CONSTRUIDA<br>BUILT AREA |
|---|---------------------------|-------------------------------|
| Vivienda / Apartment                                  | 253,74 m <sup>2</sup>     | 307,23 m <sup>2</sup>         |
| Terraza cubierta /<br>Covered terrace                 | 6,76 m <sup>2</sup>       | 8,45 m <sup>2</sup>           |
| Terraza descubierta /<br>Terrace uncovered            | 290,25 m <sup>2</sup>     | 331,51 m <sup>2</sup>         |
| S.C.U.P. / C.A.W.E.U.                                 | 0,00 m <sup>2</sup>       | 0,00 m <sup>2</sup>           |
| Total   | 550,75 m <sup>2</sup>     | 647,19 m <sup>2</sup>         |
| Sup. construida (Incl. p/p Z.Z.C.C. + Amenities)      |                           | 749,82 m <sup>2</sup>         |
| Sup. útil según DECRETO 218/2005<br>/ DECREE 218/2005 |                           | 279,11 m <sup>2</sup>         |



Documentación meramente informativa sujeta a modificaciones derivadas del desarrollo del proyecto | Design elements including terraces shape and dimensions may be modified for technical reasons



EARTH

EDIFICIO 03

Apartamento 21 P0

CUADRO DE SUPERFICIES / AREAS

|   | SUP. ÚTIL<br>USABLE AREAS | SUP. CONSTRUIDA<br>BUILT AREA |
|---|---------------------------|-------------------------------|
| Vivienda / Apartment                                  | 253,74 m <sup>2</sup>     | 307,23 m <sup>2</sup>         |
| Terraza cubierta /<br>Covered terrace                 | 6,76 m <sup>2</sup>       | 8,45 m <sup>2</sup>           |
| Terraza descubierta /<br>Terrace uncovered            | 290,25 m <sup>2</sup>     | 331,51 m <sup>2</sup>         |
| S.C.U.P. / C.A.W.E.U.                                 | 0,00 m <sup>2</sup>       | 0,00 m <sup>2</sup>           |
| Total   | 550,75 m <sup>2</sup>     | 647,19 m <sup>2</sup>         |
| Sup. construida (Incl. p/p Z.Z.C.C. + Amenities)      |                           | 749,82 m <sup>2</sup>         |
| Sup. útil según DECRETO 218/2005<br>/ DECREE 218/2005 |                           | 279,11 m <sup>2</sup>         |

