



**CORALLISA**  
SIGNATURE HOMES IBIZA

## VILLA 1 TOP VIEW

Plot surface 1.500,88 sqm

Basement 154,60 sqm

Ground Floor 198,25 sqm

First Floor 157,82 sqm

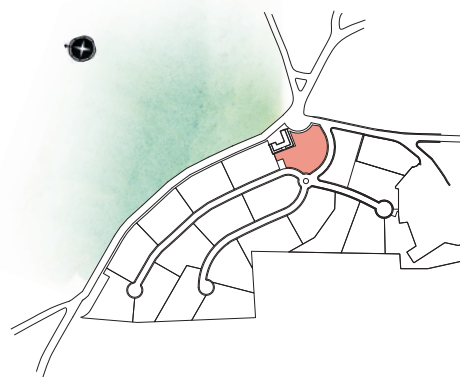
Total Interior 510,67 sqm

Covered Terrace 37,31 sqm

Uncovered Terrace 127,32 sqm

Total Exterior 164,63 sqm

Total Interior  
& Exterior 675,30 sqm

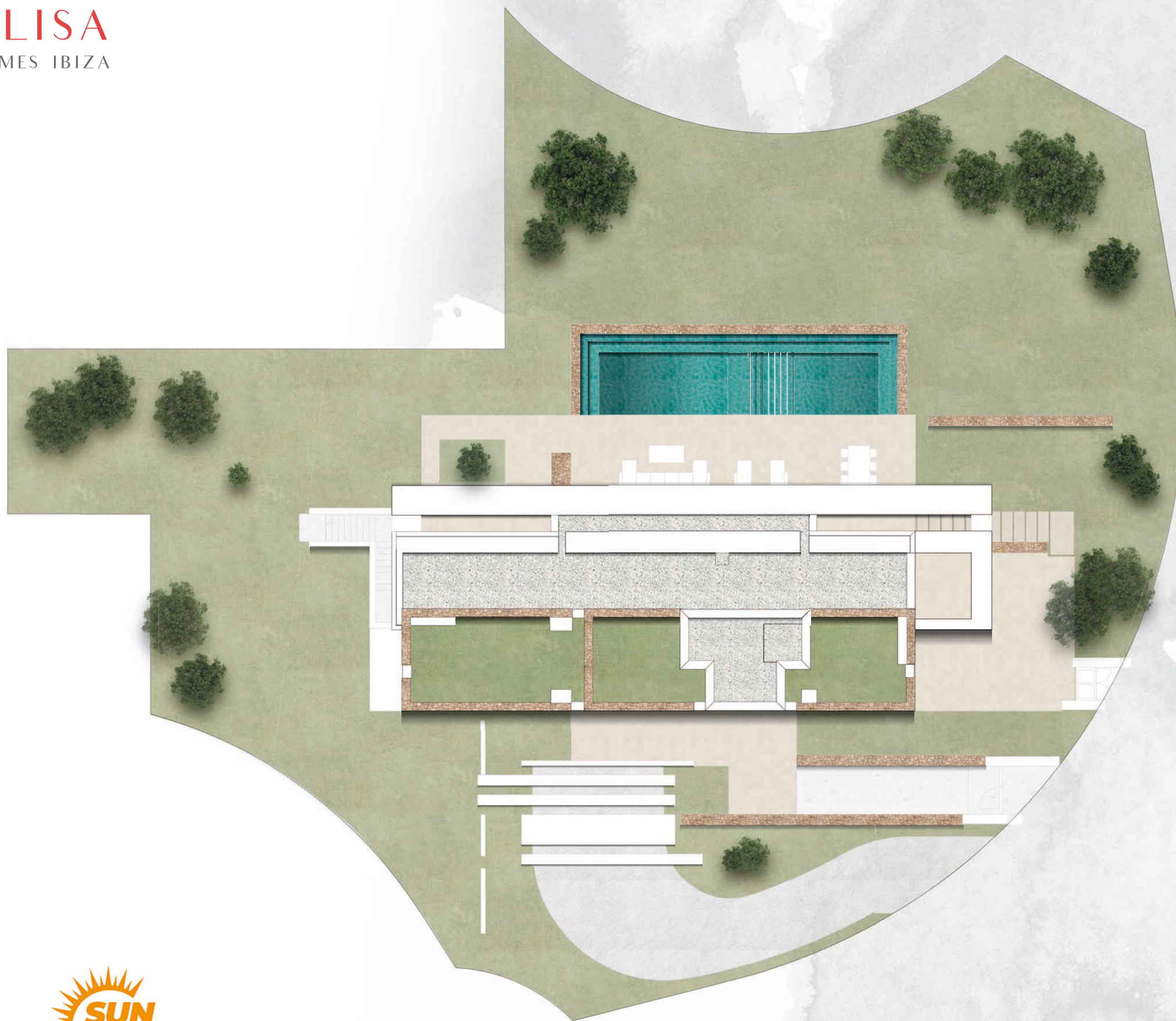


**Project developed by:**  
**CORALLISA 2019 PRIME DEVELOPMENT**

The floor plan above is not final as it has been designed in accordance with the Building Execution Project and, consequently, CORALLISA 2019 PRIME DEVELOPMENT reserves the right to include whatever changes due to technical and/or legal imperatives required by any public Administration or Agency. These changes, in any case, will be in accordance with the progress of the construction work. The accessory elements (for example, including the kitchen) are merely for illustrative purposes. The rotation sense of doors and the distribution of sanitary fittings are not binding. The surface areas shown are approximate and, may be altered for technical and/or legal reasons in the course of the construction work.



E 1/200







**CORALLISA**  
SIGNATURE HOMES IBIZA

## VILLA 1 GROUND FLOOR

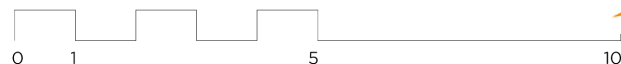
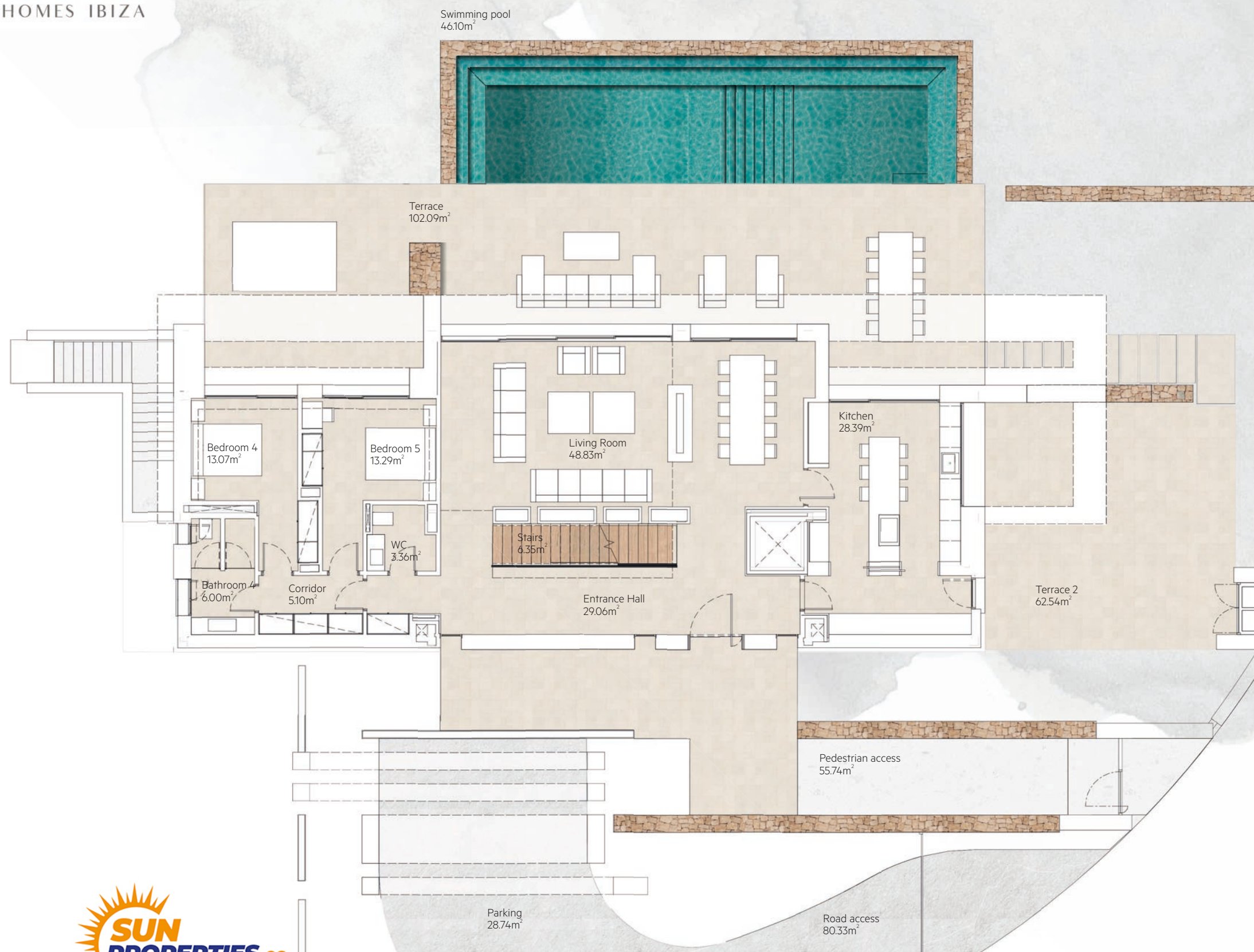
Plot surface	1.500,88 sqm
Basement	154,60 sqm
Ground Floor	198,25 sqm
First Floor	157,82 sqm
Total Interior	510,67 sqm
Covered Terrace	37,31 sqm
Uncovered Terrace	127,32 sqm
Total Exterior	164,63 sqm

**Total Interior  
& Exterior** 675,30 sqm



### Project developed by: CORALLISA 2019 PRIME DEVELOPMENT

The floor plan above is not final as it has been designed in accordance with the Building Execution Project and, consequently, CORALLISA 2019 PRIME DEVELOPMENT reserves the right to include whatever changes due to technical and/or legal imperatives required by any public Administration or Agency. These changes, in any case, will be in accordance with the progress of the construction work. The accessory elements (for example, including the kitchen) are merely for illustrative purposes. The rotation sense of doors and the distribution of sanitary fittings are not binding. The surface areas shown are approximate and, may be altered for technical and/or legal reasons in the course of the construction work.





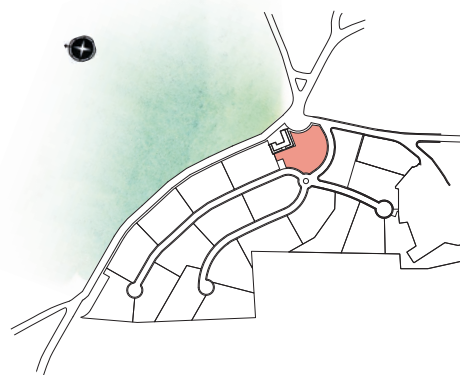


**CORALLISA**  
SIGNATURE HOMES IBIZA

## VILLA 1 FIRST FLOOR

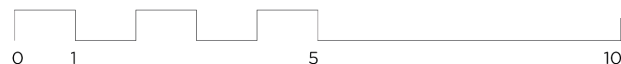
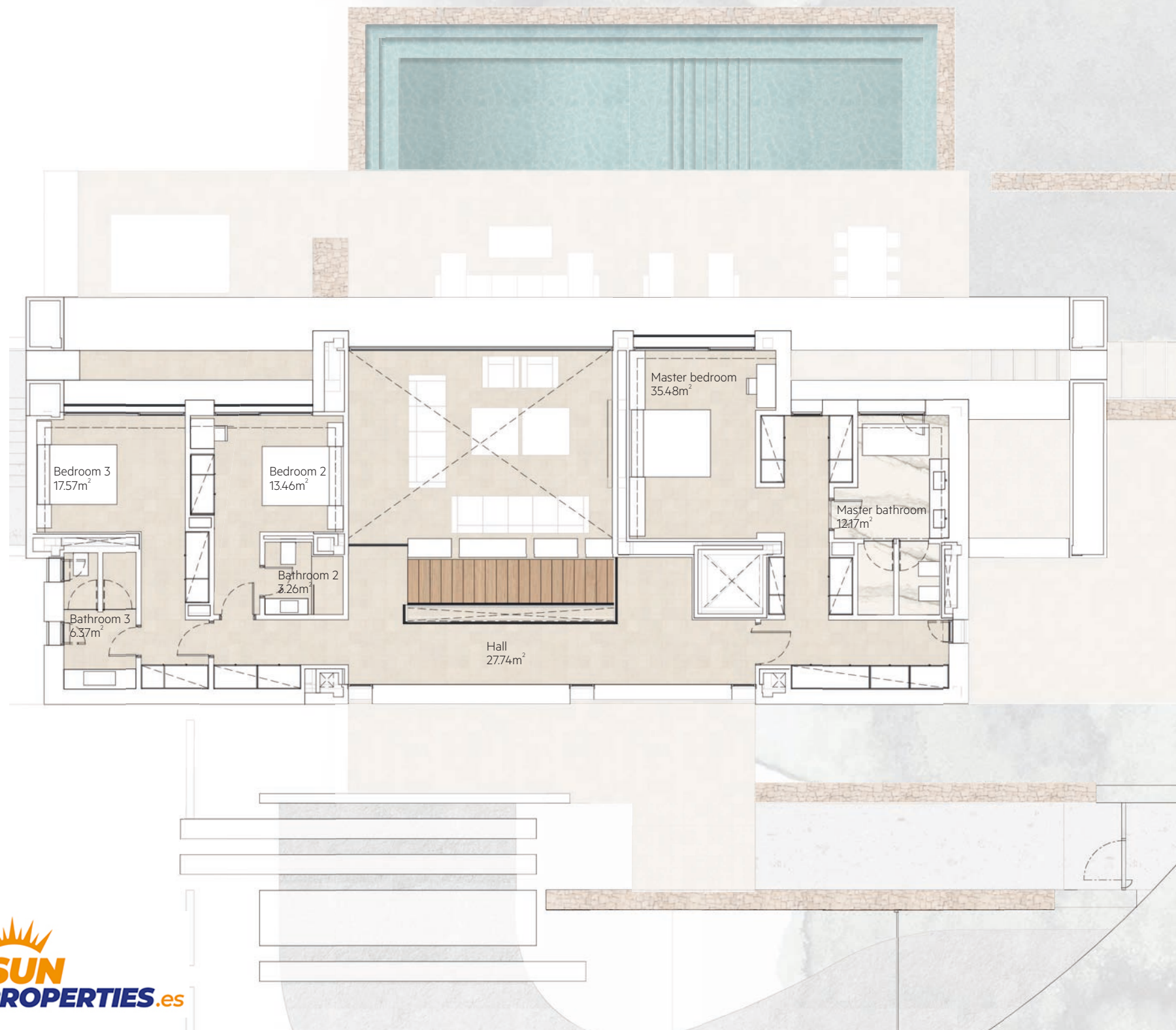
Plot surface	1.500,88 sqm
Basement	154,60 sqm
Ground Floor	198,25 sqm
First Floor	157,82 sqm
Total Interior	510,67 sqm
Covered Terrace	37,31 sqm
Uncovered Terrace	127,32 sqm
Total Exterior	164,63 sqm

Total Interior  
& Exterior 675,30 sqm



**Project developed by:**  
**CORALLISA 2019 PRIME DEVELOPMENT**

The floor plan above is not final as it has been designed in accordance with the Building Execution Project and, consequently, CORALLISA 2019 PRIME DEVELOPMENT reserves the right to include whatever changes due to technical and/or legal imperatives required by any public Administration or Agency. These changes, in any case, will be in accordance with the progress of the construction work. The accessory elements (for example, including the kitchen) are merely for illustrative purposes. The rotation sense of doors and the distribution of sanitary fittings are not binding. The surface areas shown are approximate and, may be altered for technical and/or legal reasons in the course of the construction work.





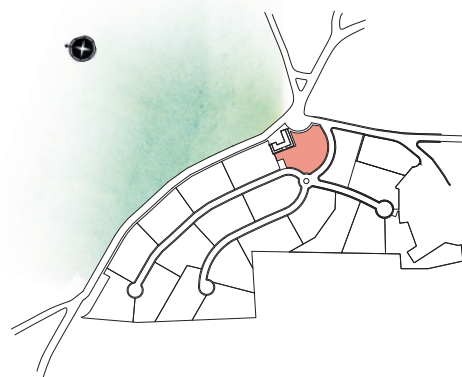


**CORALLISA**  
SIGNATURE HOMES IBIZA

## VILLA 1 BASEMENT

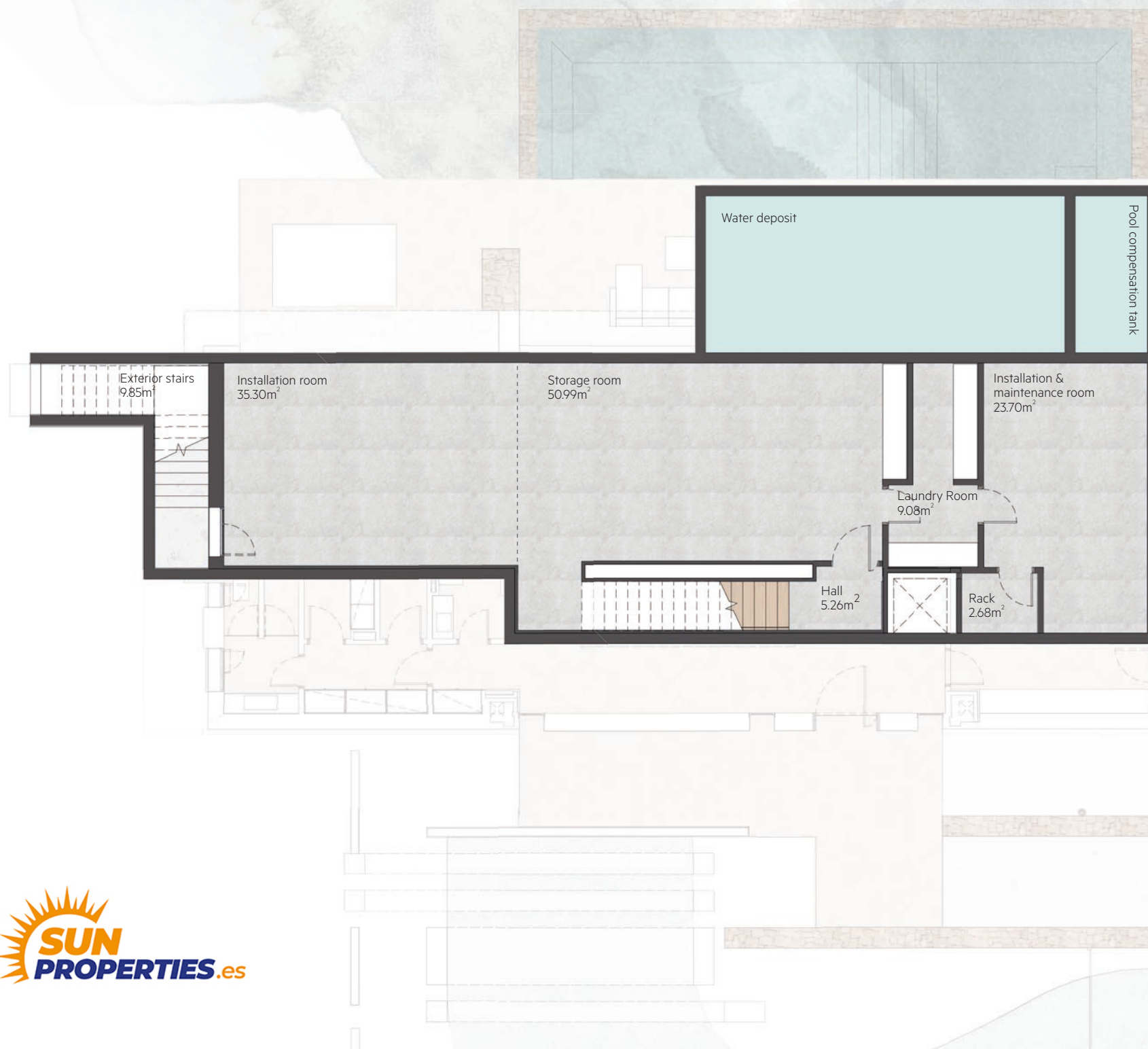
Plot surface	1.500,88 sqm
Basement	154,60 sqm
Ground Floor	198,25 sqm
First Floor	157,82 sqm
Total Interior	510,67 sqm
Covered Terrace	37,31 sqm
Uncovered Terrace	127,32 sqm
Total Exterior	164,63 sqm

**Total Interior  
& Exterior** 675,30 sqm



### Project developed by: CORALLISA 2019 PRIME DEVELOPMENT

The floor plan above is not final as it has been designed in accordance with the Building Execution Project and, consequently, CORALLISA 2019 PRIME DEVELOPMENT reserves the right to include whatever changes due to technical and/or legal imperatives required by any public Administration or Agency. These changes, in any case, will be in accordance with the progress of the construction work. The accessory elements (for example, including the kitchen) are merely for illustrative purposes. The rotation sense of doors and the distribution of sanitary fittings are not binding. The surface areas shown are approximate and, may be altered for technical and/or legal reasons in the course of the construction work.







# CORALLISA

SIGNATURE HOMES IBIZA

## VILLA 1 ELEVATION

Plot surface	1.500,88 sqm
Basement	154,60 sqm
Ground Floor	198,25 sqm
First Floor	157,82 sqm
Total Interior	510,67 sqm
Covered Terrace	37,31 sqm
Uncovered Terrace	127,32 sqm
Total Exterior	164,63 sqm
Total Interior & Exterior	675,30 sqm



### Project developed by: CORALLISA 2019 PRIME DEVELOPMENT

The floor plan above is not final as it has been designed in accordance with the Building Execution Project and, consequently, CORALLISA 2019 PRIME DEVELOPMENT reserves the right to include whatever changes due to technical and/or legal imperatives required by any public Administration or Agency. These changes, in any case, will be in accordance with the progress of the construction work. The accessory elements (for example, including the kitchen) are merely for illustrative purposes. The rotation sense of doors and the distribution of sanitary fittings are not binding. The surface areas shown are approximate and, may be altered for technical and/or legal reasons in the course of the construction work.

